



SUNCAKE SERIES

BMM-T1/054A

A Balcony Solar System - Plug & Play Portable Solar
Save Up to 3kWh A Day

ENJOY SOLAR, A PIECE OF CAKE

Portable Energy for Wherever You Are

The Suncake Balcony Solar System is a plug-and-play portable power generation kit. With lightweight PV panels, a microinverter, straps, and cables, you can easily generate your own electricity and use it anywhere. Simply attach the solar modules to the railing and plug them into an electrical outlet to start generating power. Moreover, it is entirely portable, you can unplug it, move it, and reconnect it as needed. Whether on an apartment balcony, in a courtyard, on a terrace, exterior walls, balcony railings, fences, or even outdoor tables, this system allows you to use electricity easily anytime, anywhere.

Reasons to Choose Us



Lightweight and Portable

The solar panels weigh 3.5 kg/m², and the entire system package weighs 21 kg.



A Complete System with High Cost Performance

The system includes PV panels, microinverters, straps, cables and accessories, ready for immediate installation and use.



Versatile Applications

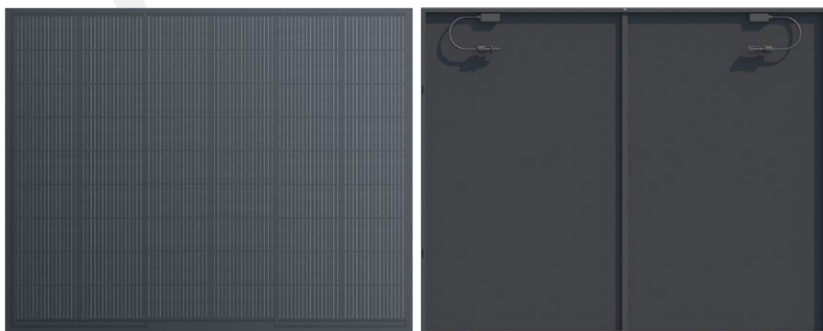
Suitable for ground installation, flat roofs, balcony railings, courtyards, fencing, river and road barriers, etc.



Easy to Install

Plug-and-play functionality allows for easy unplugging, moving, and reconnecting, with simple module expansion.

Suncake Portable Solar Kit



PV Panel



Microinverter



AC Cable



Accessory



Straps

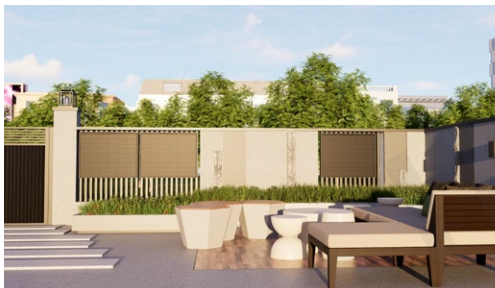
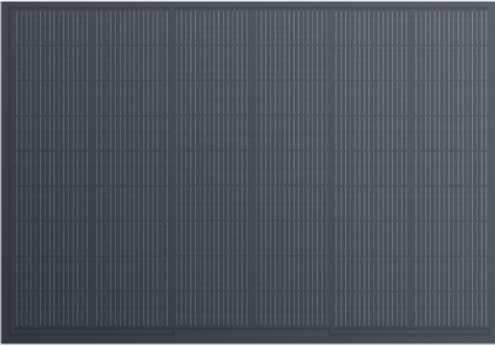


DC Cable

System Solution

System Capacity	Panel unit	Straps	Microinverter	Microinverter Accessory	DC Cable	AC Cable
800W	4pcs	4pcs	800W	1pcs	4pcs	1pcs

Efficient BIPV Panels



BMM-T1/054A

Dimension*	1147*919*15mm
Weight	3.5±0.5kg
Cell Type	Mono PERC Half Cells(54 pcs)
Cable	4mm ²

Electrical Data (STC)

Power	200W
Power/m ²	193W/m ²
Voltage at Max Power (Vmpp)	15.51V
Voltage at Open Circuit (Voc)	18.18V
Current at Max Power (Impp)	12.90A
Current at Short Circuit (Isc)	13.69A

Operation Conditions

Max. Front Side Static Load	2400Pa
Max. Rear Side Static Load	2400Pa
Maximum System Voltage	1500V
Maximum Fuse Rating Operation	25A/30A
Temperature Range	-40°C~+85°C
The Rated Operating Temperature	45±2°C
Fire-resistant Class	C
Protection Class	II

Temperature Parameter

Isc TP	0.048%/°C
Voc TP	-0.28%/°C
Pmpp TP	-0.35%/°C

*within a tolerance of 2 mm for length and 1 mm for width and height

Balcony Solar Power System with Microinverter



GW0.8K-MIS-G10

Size	256*210*34mm
Weight	3.4kg
Commonly Used Module Power	200-600W
Nominal Output Power	800W
MPPT Range	13~60V
Max. Input Current Per MPPT	18A
Max. Efficiency	96.40%
Operating Temperature Range	-40°C~+65°C, < 45°C No load shedding
Noise	< 22dB
Communication	WiFi / Bluetooth
Topology	High Frequency Isolated
No. of MPP Trackers	2
No. of Input Strings Per Tracker	1
PV String Current Monitoring	Integrated
Anti-islanding Protection	Integrated
AC Surge Arrester	AC type III

Balcony Solar Power System with Storage

GW0.8/1.9-ESA-PS-G10



Capacity	1920Wh
Size	480*275*250mm
Weight	23kg
Max MPPT Input Power	2400W
Max PV Input Current	18A
AC Rated Input Power	1500W
Max AC Off-Grid Output Power	1500W
AC Output (on Grid)	800W
PV Input Quantity	4
MPPT Tracking Quantity	4
Ingress Protection	IP65
Communication	WiFi / Bluetooth
Battery Type	LiFePO4
Cycle Life	6000 Cycles at 70%
Warranty	10Years

Versatile Applications

